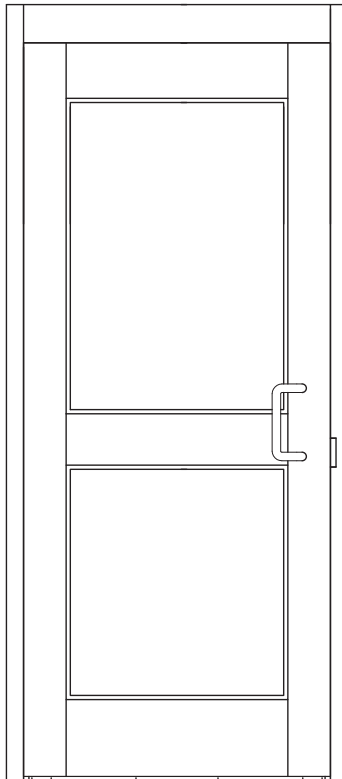


# **Tiffany T36-ADA Full Height ADA Gate**

## **Service & Installation Manual**



**Note: Successful installation depends on reading this manual.**

*Please keep this service manual after installation. If an installation is done by a construction company or outside installer, please pass this book along to the end user. This book is required for maintenance, troubleshooting & repairs.*

# Full Height Aluminum ADA Door

Manual or Electronic Passage Gate | Interior Application

T36-ADA



The T36-ADA is a solution for projects requiring an aesthetically pleasing interior security door. This self-closing unit provides wheelchair accessible 36" passage width (overall width 40"). It is a "heavy-duty" stile and rail door that can withstand high traffic and abuse. Its low voltage strike lock can be used mechanically or electronically depending on your needs. The T36-ADA is normally paired with the T80-Single, T80-Tandem, P60 or RD70 aluminum-polycarbonate turnstile portals.



T36-ADA



Sample Application:  
T80-T and T36-ADA door

## We're the #1 Choice of Top Architects, Security Pros and Engineers

For more than 30 years, Controlled Access has been the globally trusted name in pedestrian control equipment. Made in Ohio and shipped worldwide, we are the first choice of leading architects, facility managers, security consultants, and engineers. Whether your project requires high security full-height turnstiles, waist high units, or matching ADA accessible gates, Controlled Access is the secure choice. We're experienced in access control systems, from card readers to biometric scanning, to give you the power to control access.



Hydraulic door  
closer included



Optional Push Bar available for  
free exit configurations. Can be  
ordered with a battery alarm or  
electronic switch if needed



# Full Height Aluminum ADA Door

## Manual or Electronic Passage Gate | Interior Application

T36-ADA



### Applications:

Ideal for controlling orderly flow of foot traffic in indoor/outdoor settings where ADA passage width is required.

### Product Features:

#### Materials & Finishes:

- Heavy duty anodized aluminum extrusions
- 1/4" tempered glass
- Door handle
- Finish: Standard anodizing finish is clear. Also available in dark bronze

#### Hardware:

- Hydraulic Closer: Norton 9300 Series with aluminum finish
- Electronic Strike: Adams Rite 7100 Series, 24VDC
- Deadlatch: Adams Rite 4510 Series with 1.5" Backset
- Cylinder: Schlage C keyway - standard (SFIC available)

### Design & Construction:

- Designed for secure operation with aesthetics in mind
- Minimally exposed hardware
- Continuous hinge

### Options:

- Magnetic lock (replaces strike)
- Push buttons (wired or wireless)
- Motorized door opener  
(Norton 5730 Low Energy Operator, aluminum)  
(Interior applications only)  
(Requires 110VAC)
- Push to exit panic bar by Adams Rite 8400, aluminum

### Dimensions:

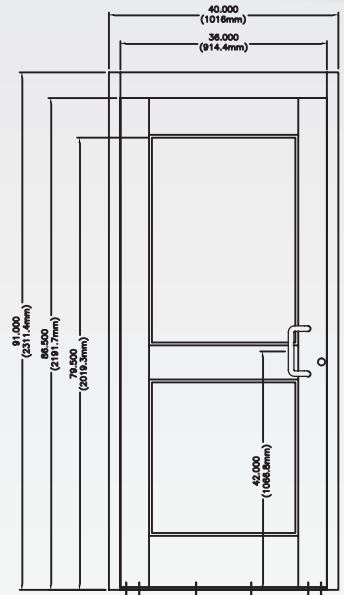
- **Size of opening (pedestrian clearance):** 36" (914.4mm)
- **Interior Height:** 86.5" (2197.1mm)
- **Exterior Height:** 91" (2311.4mm)
- **Overall Width:** 40" (1016mm)

\* Dimensions are subject to change without notice

### Warranty:

Units are warranted against defects in materials and workmanship for a period of one year from date of delivery. See warranty information for specific details.

**Pairs well with our full-height aluminum turnstiles (see model RD70, P60, T80-S, and T80-T)**



\* Dimensions are approximate

### Electrical Specifications:

UL Listed Electronic Strike:  
Input Voltage: 24VDC  
Input Current: 170 mA

### Standards and Codes:

Austenitic stainless steel:  
ASTM A240, A249, A276

Hot rolled steel:  
AISI C-1020, AISI C-1018

Hot dipped galvanizing:  
ASTM A-143, ASTM A-153-80

All fasteners provided meet IFI ANSI/  
ASME Fastener Standards

American Welding Society (AWS)  
Standard D 1.1



RD70 and T36-ADA door



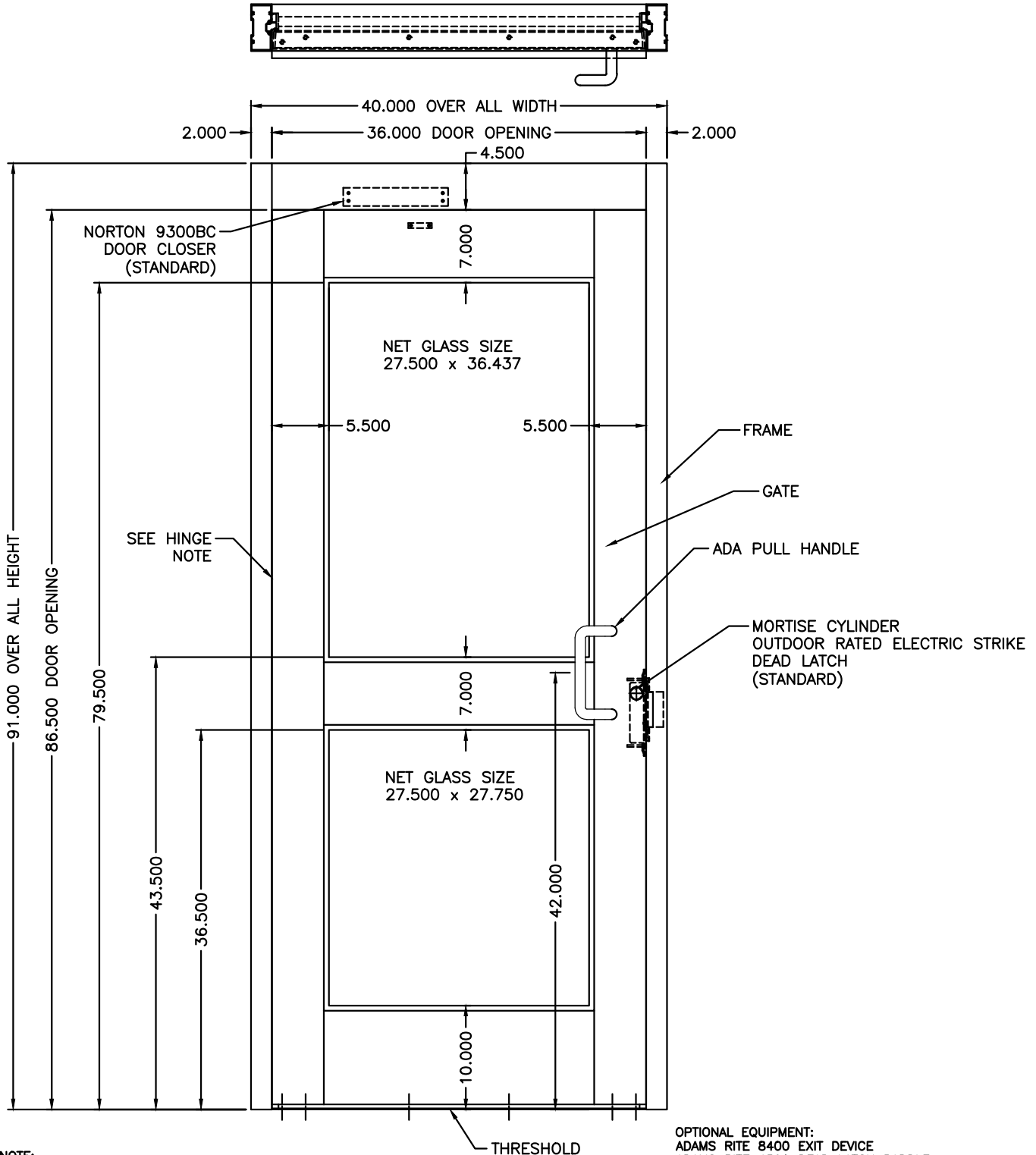
P60 and T36-ADA door



Controlled Access, Inc. is certified by Advantage International Registrar to be an ISO 9001:2015 company

REVISION HISTORY		
SYMBOL	DESC.	DATE

ALUMINUM SWING GATE P.N. T36-ADA



HINGE NOTE:  
HINGE TYPE: CONTINUOUS SPECIFY RH OR LH  
FASTENERS: STAINLESS STEEL PHILLIPS FLATHEAD SCREWS

OPTIONAL EQUIPMENT:  
ADAMS RITE 8400 EXIT DEVICE  
ADAMS RITE 4590 DEAD LATCH PADDLE  
NORTON 5700 POWER OPERATOR  
BRACKETS AVAILABLE FOR ATTACHING TO TURNSTILE OR WALL

MATERIAL:	SCALE: 1=14	APPROVED BY:	DRAWN BY: LC III
ALUMINUM EXTRUSION	DATE: 9/18/15		REVISED:
FINISH: ANODIZED			
TOL. UNLESS OTHERWISE SPEC.			
.X ± .1 .XXX ± .015			330-273-6185
.XX ± .03 ANGLES .5°			FAX 330-273-4468
			USA 1-800-942-0829
			FAX 1-800-942-0828
			TIFFANY T36-ADA ALUMINUM SWING GATE

## Pre-installation Tips for the T36-ADA Full Height ADA Gate

Before installing the T36-ADA Gate, make sure to review these pre-installation tips to ensure a successful installation.

Before you get started:

- If you are electronically locking or unlocking the gate, be aware of the various methods to accessing the electronic strike before installing. Details are provided later in this manual.
- Although the strike is field reversible, each gate comes pre configured to lock or open upon power failure. We configure these gates based on how they were ordered. Manual gates will always need to have the strike configured as fail lock.
- It is **crucial** that the frame is installed squarely. The provided floor plate on the gate helps to ensure a square installation, but anchoring to unlevel concrete may throw this off.



**Note:** Failure to install the frame square can result in the gate failing to lock properly.

# Installation Instructions for the T36-ADA Full Height Gate

## Installation Method

1. Place gate into entry way where it will be installed.
2. Screw the floor plate to the floor using 3/16" x 2.5" min. length Tapcon™ screws.
3. Utilizing the support brackets located near the top, secure gate to nearby turnstile and/or adjoining wall / structure with 3/8" x 1.5" bolts.
4. Make 24VDC electrical connections to the electronic strike, if required.



# ELECTRIC STRIKES



ES-1

## VOLTAGE

Available in 12, 16 or 24 volt AC and DC. DC and AC Continuous units are silent, AC intermittent units "buzz" on operation.

## CURRENT DRAW/AMPS

Volts	AC Int.	DC or AC Cont.
12	1.42	.33
16	1.03	.22
24	.74	.17

## 7100

*Flat Faceplate for Aluminum Jambs*

## 7101

*Radiused Faceplate for Aluminum Stiles*

*ANSI/BHMA Type EO9321 (Grade 1)  
for Adams Rite or Cylindrical Latches*

**UL Listed for Burglary Resistance**

### ▼ Case

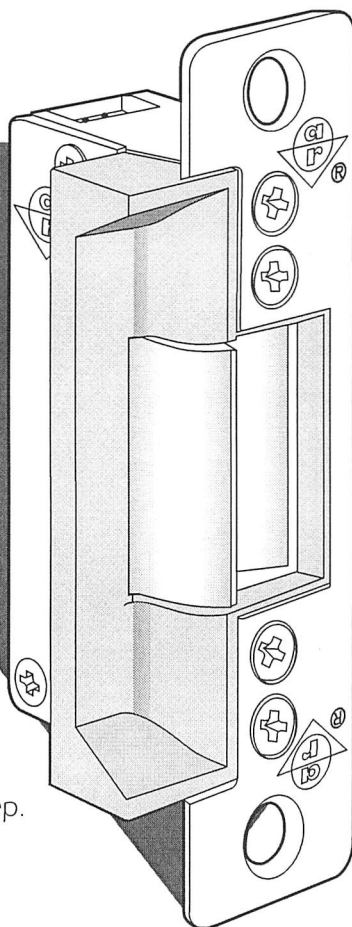
Approx. 1" x 3-3/8" x 1-5/8" deep.  
Zinc-aluminum alloy.

### ▼ Strike Lip

Basic 7100 strike has lip of proper length for 1-3/4" thick door that closes flush with jamb edge. Where door thickness or jamb shape differs from this standard relationship, extended lip available, specified by last dash number. (Not available on 7101.)

### ▼ Fail Safe/Fail Secure

Field convertible from one mode to the other. However, AC intermittent solenoid must not be used continuously in either.



PATENTED

### ▼ Strike Opening

5/8" x 1-7/16" x 1/2" deep. Bolt retainer jaw is stainless steel. Strike accepts bolt of any Adams Rite 4700 Series deadlatch or cylindrical latches shown with model 7140. See 7160 and 7170 strikes for use with other make mortise latches.

### ▼ Faceplate

Measures 1-1/4" x 4-7/8". 7100 has flat faceplate; 7101 is radiused to match nose on inactive leaf in a pair of narrow stile glass doors. Available in a wide range of architectural finishes.

### ▼ Function

Remote electrical control of any door equipped with an Adams Rite Series 4500 or 4700 (or similar) deadlatch or "key-in-knob" sets. Electrical actuation unlocks strike jaw, releasing latchbolt so door can be opened without operating latch itself. Extremely compact mechanism fits into aluminum jamb (or opposing door) sections as shallow as 1-5/8". Fits prep for 7500/7800/7000 Series.

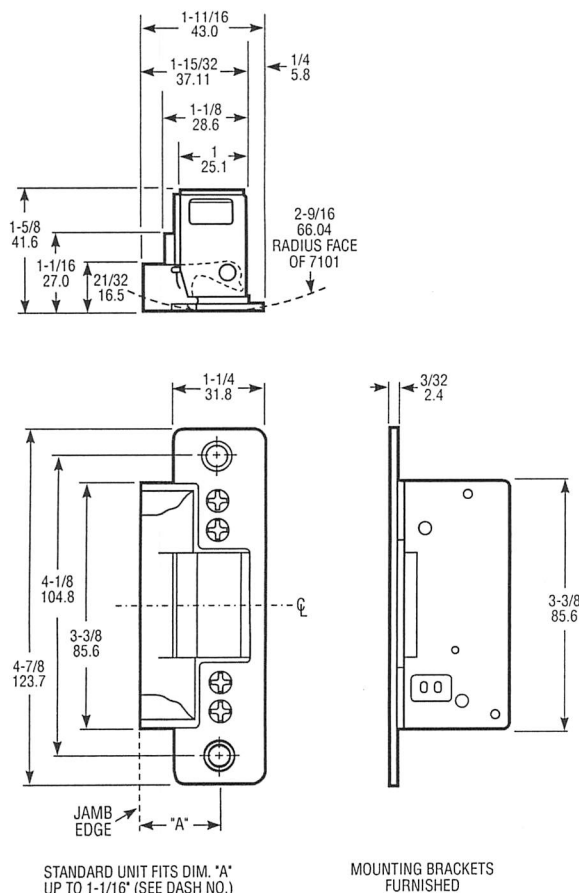


# 7100, 7101 Electric Strike

## DIMENSIONS

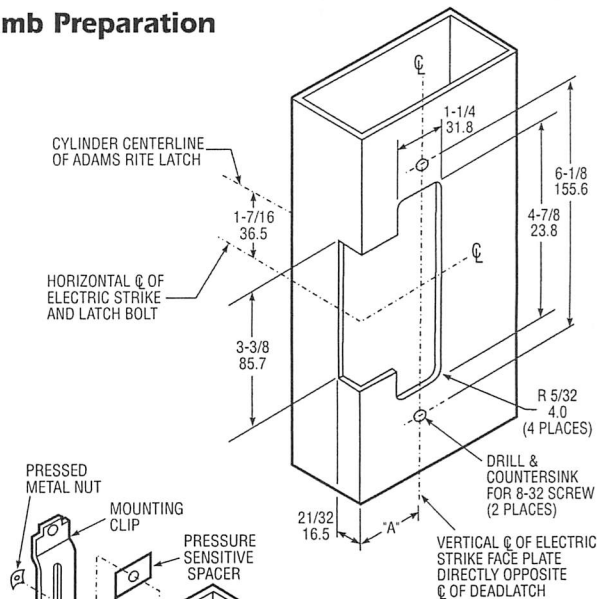
INCHES  
MILLIMETERS

Nominal, subject to tolerance extremes.

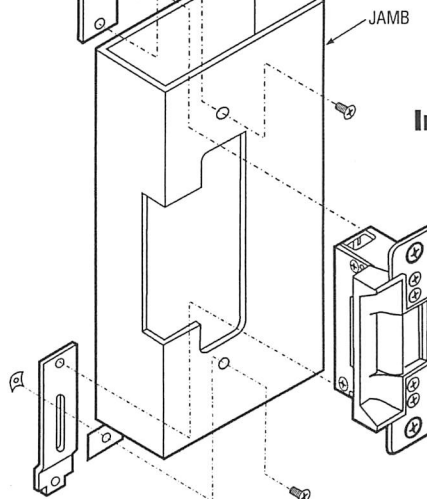


## INSTALLATION

### Jamb Preparation



### Installation



Turn strike  
upside down for  
opposite hand.

## HOW TO ORDER

Specify quantity and the following information.  
Order 4603 Rectifier and/or 4605 or 4606 Transformer separately.  
(4603 included with AC Cont.)

Specify Model	Voltage	Current & Duty	Features**
7100 Flat	3 12 Volt	1 DC Continuous or Intermittent	0 Std/Fail-Secure
7101 Radius	4 16 Volt	2 AC Continuous*	5 Fail-Safe
	5 24 Volt	4 AC Intermittent	7 Monitor/Fail-Safe
			9 Monitor/Fail-Secure

**7100-315-605-00**

\*A DC strike with rectifier attached for use on AC current.

\*\*Fail-secure can be field converted to fail-safe or vice-versa.

\*\*\*7101 available in 628, 313, 335 only.

### Finish\*\*\*

628	Clear Anodized
605	Bright Brass
612	Satin Bronze
613	Oil Rubbed Bronze
313	Dark Bronze Anod.
335	Black Anodized
625	Bright Chrome
626	Satin Chrome

### 7100 Lip Extension (Dim. "A") (Door Centerline to Jamb Edge)

00	1.06" or less	07	2.25"
01	1.50"	08	2.38"
02	1.63"	09	2.50"
03	1.75"	10	2.63"
04	1.88"	11	2.75"
05	2.00"	12	2.88"
06	2.13"	13	3.00"

## STANDARD PACKAGE

Individually boxed with mounting screws, mounting brackets and adhesive shims to accommodate jamb or stile extrusion thickness greater or less than nominal 1/8 inch.

## OPTIONS

Available with two monitoring signal switches which sense whether latch bolt is in strike and whether strike jaw is blocked. Choice of voltage in AC and DC for intermittent or continuous duty. Series 7100 (flat) available with extended strike lip (see chart). Specify assembled for either fail-secure (locked when unpowered) or fail-safe (locked when powered) operation, but can be field-converted to the other mode.

**4603 Rectifier** - Converts AC to DC, installs in low voltage line between transformer and strike. Rated 2 amps. (200 PIV).

**4605 Transformer** - Converts 120VAC to 24VAC. Rated 40 Volt-amp output assures plenty of power for strike release. Patented mounting bracket fits in knockout hole of standard junction boxes.

**4606 Transformer** - Plug-in version for standard wall outlet.

See separate specification sheet for more information on Strike options.



### **Changing From Fail-Safe to Fail-Secure & Vice-Versa:**

- 1) Remove faceplate, subcover (2), & cover (1)
- 2) Remove latch (7), blocking arm (6), blocking arm return spring (16), & retainer plate (15)

### **Changing From Fail-Secure to Fail-Safe:**

- 1) With bolt facing you remove solenoid (3), plunger (4), & shuttle return spring (5).
- 2) Place shuttle return spring (5) on left-hand side of shuttle (17). Place solenoid and plunger facing the side opposite of shuttle return spring into groove on the shuttle. (See page three for diagram)
- 3) Place retainer plate on top of solenoid and place latch, blocking arm & blocking arm return spring in original position.

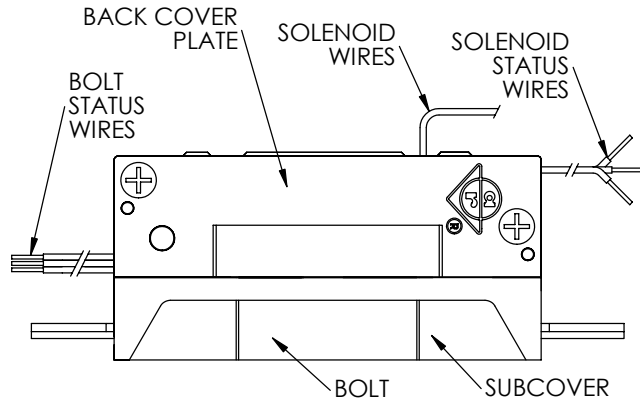
**Note: Fail-safe must be continuous duty only.**

### **Changing from Fail-safe to Fail-secure:**

- 1) With bolt facing you remove solenoid (3), plunger (4) & shuttle return spring (5).
- 2) Place shuttle return spring (5) on right hand side of shuttle (17). Place solenoid and plunger facing the side opposite of shuttle return spring into groove on shuttle. (See page three for diagram)
- 3) Place retainer plate on top of solenoid and place latch, blocking arm & blocking arm return spring in original position.

Faceplate, subcover & cover can now be added to close strike.

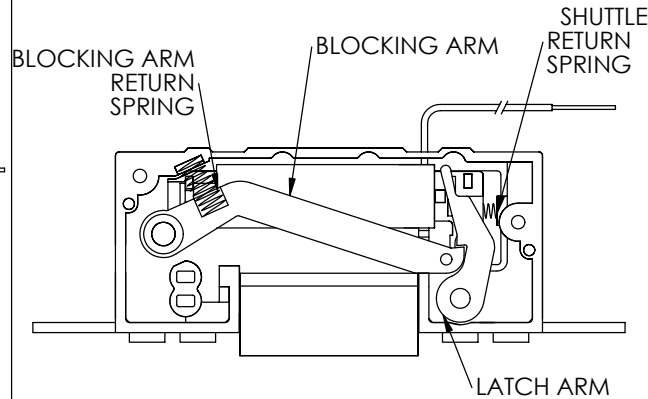
## WIRE CODING FOR MONITORED VERSION



MONITOR WIRING  
NC: RED  
NO: WHITE  
COMMON: BLACK

POWER INPUT WIRING  
12VAC: YELLOW/BLACK  
12VDC, 24VAC: RED/BLACK  
24VDC: WHITE/BLACK

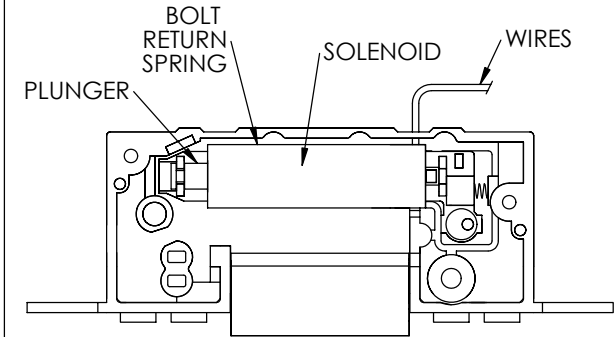
## STEP 1



REMOVE SUBCOVER (ONE SCREW)  
REMOVE BACK COVER PLATE (TWO SCREWS)  
CAREFULLY REMOVE BLOCKING ARM SPRING  
REMOVE BLOCKING ARM AND LATCH ARM

## STEP 2

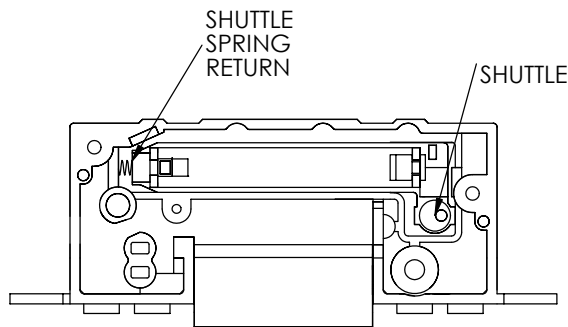
### FAIL SECURE



REMOVE SOLENOID

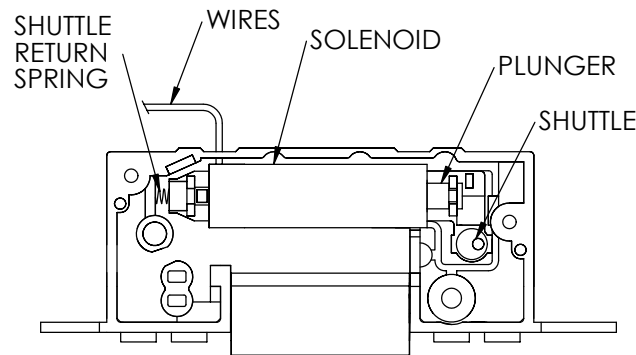
## STEP 3

### FAIL SAFE



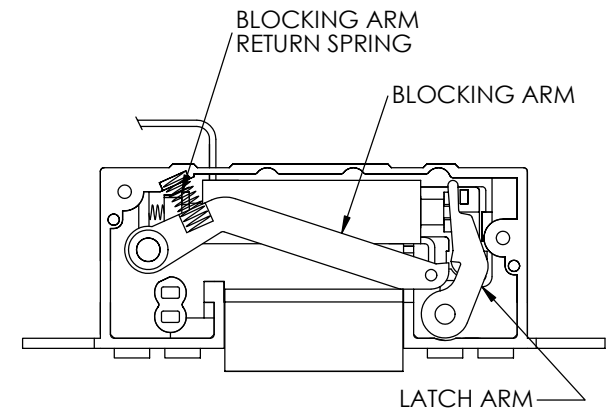
TRANSFER SHUTTLE RETURN SPRING TO OPPOSITE END OF SHUTTLE. NOTE: WHATEVER THE FUNCTION, THE SHUTTLE RETURN SPRING SHOULD ALWAYS BE AT OPPOSITE END TO THE SOLENOID PLUNGER.

## STEP 4



REVERSE SOLENOID AND REPLACE, ENSURING CORRECT PLACEMENT AND ALIGNMENT. WITH THE SOLENOID SEATED PROPERLY THE SHUTTLE SHOULD MOVE FREELY.

## STEP 5



REPLACE LATCH ARM AND BLOCKING ARM (WITH SPRING)  
REPLACE BACK COVER PLATE  
REPLACE SUBCOVER  
\* TEST PRIOR TO INSTALLATION\*

# 7100 EL-STRIKE FIELD CONVERSION

80-0180-472

Rev. A

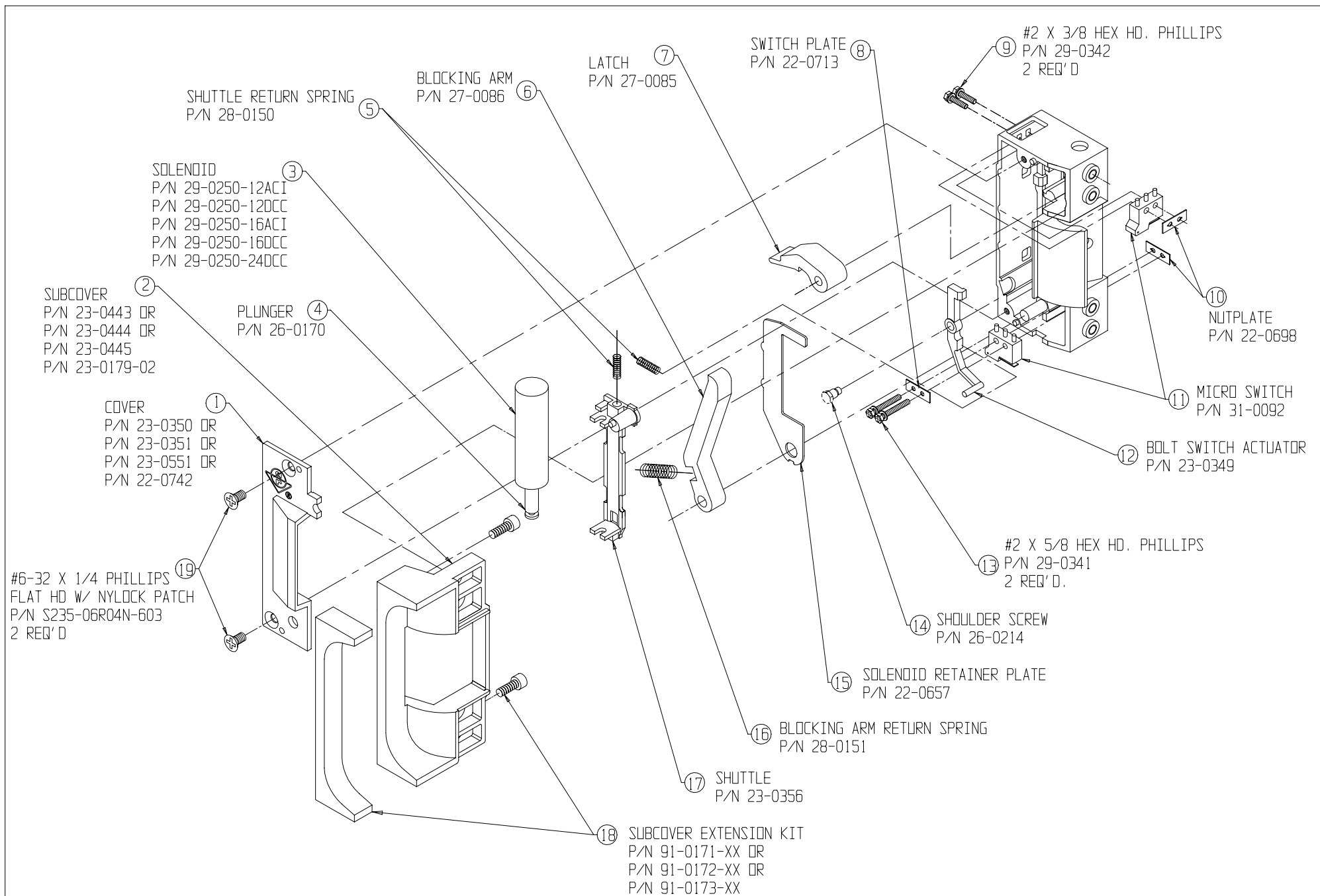
ECN: 10605

Page 1 of 1

Date: 10/22/2003

Apprvd:

8



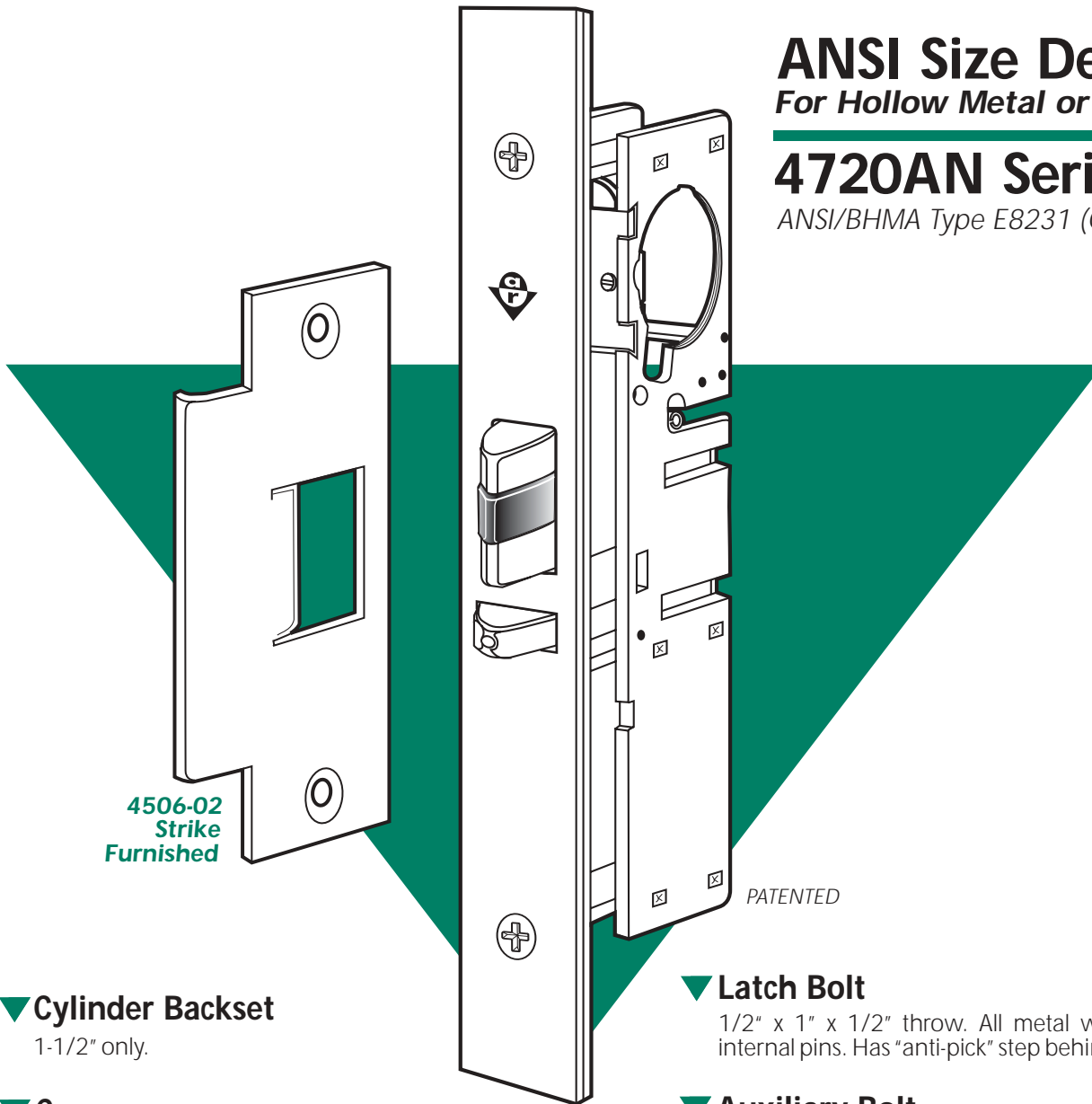
50-7100 C 02/98

## 7100 SERIES ELECTRIC STRIKE

## ANSI Size Deadlatch For Hollow Metal or Wood Doors

### 4720AN Series

ANSI/BHMA Type E8231 (Grade 1)



#### ▼ Cylinder Backset

1-1/2" only.

#### ▼ Case

Steel with corrosion-resistant plating.  
1" x 5-13/16" x 2-5/32".

#### ▼ Function

For hollow metal or wood doors prepared for hardware according to the specifications of the American National Standards Institute, the 4720AN Deadlatches provide precise traffic control. A key-controlled bolt hold-back feature allows a door to be free-swinging part of the day and exit-only when the bolt is free to latch. This allows a "locked" entrance to be used as an exit by customers or visitors already in the building. Interchangeable, without stile or jamb modification, with any MS1850SN Deadbolt of same faceplate shape. Replaces 4520ANSI Deadlatch.

#### ▼ Latch Bolt

1/2" x 1" x 1/2" throw. All metal with hardened steel internal pins. Has "anti-pick" step behind mounting face.

#### ▼ Auxiliary Bolt

All metal with hardened steel pin. Deadlocks latch bolt to prevent "loiding" or case-knife entry.

#### ▼ Strikes

Stainless steel, US32D Satin finish (630). Furnished to ANSI preparation specifications for flat jamb. (See also page SW-26 and Electric Strike section.)

#### ▼ Operation

Turn key or operate handle to retract spring-loaded latch bolt. To hold bolt retracted, push it in and secure by reverse turn of key (see back page). Uses any standard mortise cylinder with MS® cam (see page SW-28).



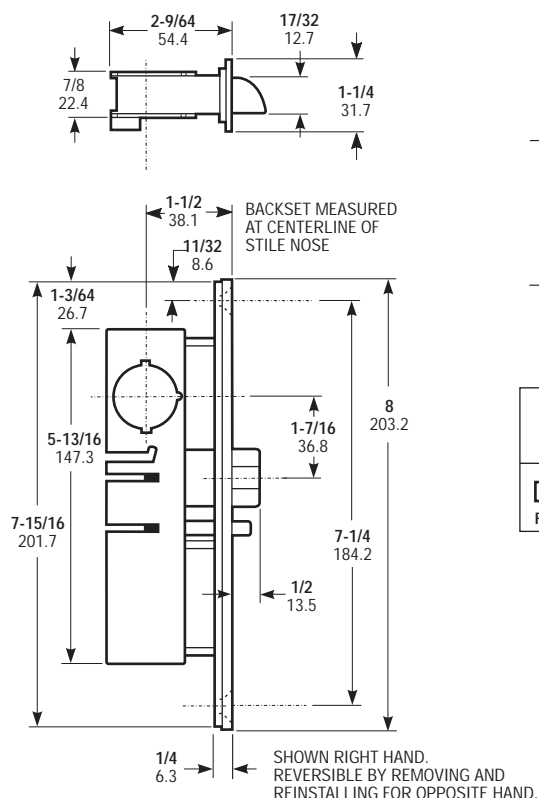


# 4720AN Series Deadlatch

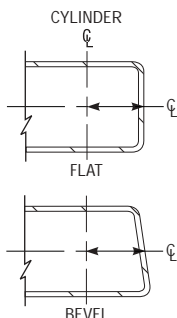
## DIMENSIONS

INCHES  
MILLIMETERS

Nominal, subject to tolerance extremes.



HOW BACKSET IS MEASURED:

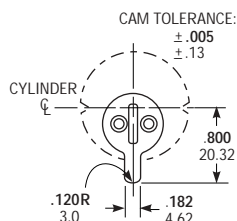


ARMORED FACEPLATE  
1-1/4" x 8"

FLAT 4720AN

## Cylinder Cam

4720AN Series Deadlatches are operable by any standard 1-5/32" diameter mortise cylinder with special MS® cam dimensioned as shown. Cylinders with MS® cams can be readily obtained from most cylinder manufacturers. See page SW-28 for cylinder make and trim information.



## HOW TO ORDER

Specify quantity and the following information.  
Order related hardware separately.

### Door Nose Shape

**0AN** Flat  
**2AN** Bevel

### Handing

**05** LH or RHR  
**06** RH or LHR

### Strike

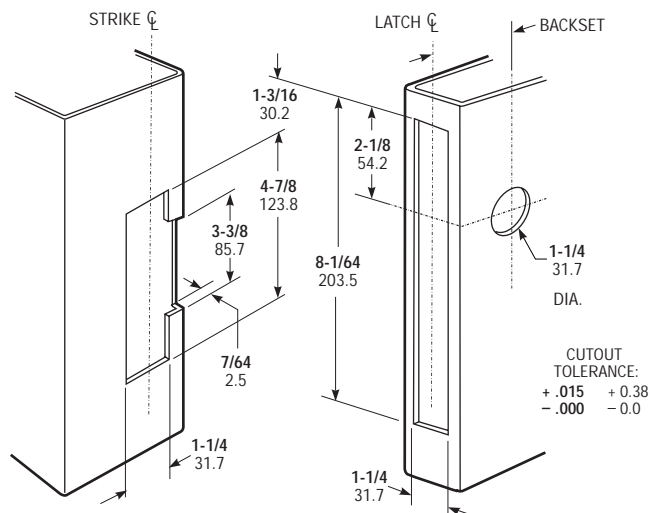
**602** 4506  
**000** Less Strike

**4720AN06-602-313**

### Finish

**628** Clear Anodized  
**612** Satin Bronze  
**313** Dark Bronze Anod.  
**335** Black Anodized

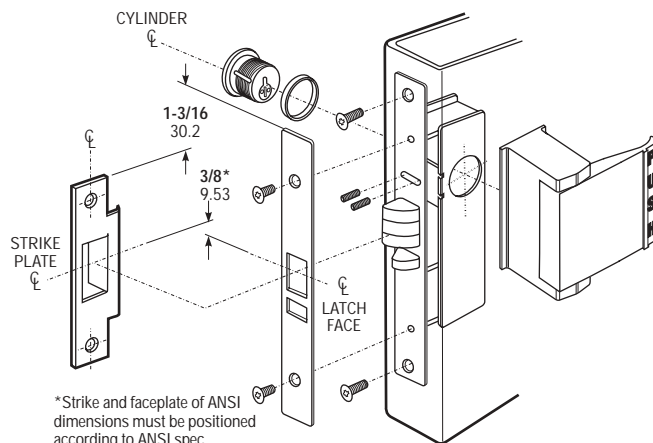
## INSTALLATION



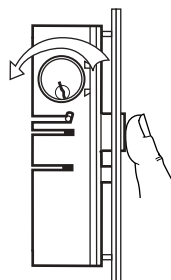
### Jamb Preparation

### Door Preparation

Identical to MS1850SN Series  
(See also prep for 4590 Paddle)



### Latch, Paddle & Cylinder Installation



### Bolt Holdback

A reverse turn of the key (while bolt is held fully retracted) retains the bolt, allowing the door to be free swinging.

## OPTIONS

Door Nose Shape, Finish, Strike and Handing must be specified when ordering. For Handles, see page SW-25 & 26. For Paddles, see page SW-27.

## STANDARD PACKAGE

Individually boxed with strike and machine screws for mounting. Cylinders, paddle or handle available at extra cost. Shipping weight: 1-1/4 lbs. Also available in a 20 unit pack for volume users.

# Norton®

## Tri-Style 1600 Series

Non Handed Door Closer

### Installation Instructions

80-9316-2502-020 (12-02)

### Non Hold Open Models

Sized  
(Sizes 2,3,4,5,6)

Adjustable  
(Sizes 3 thru 6)

Weaker  
↓  
Stronger  
+

1602BC  
1603BC  
1604BC  
1605BC  
1606BC

1601  
(Sizes 1 thru 4)  
1601BF



**CAUTION**  
An Incorrectly installed or improperly adjusted door closer can cause property damage or personal injury. These installation instructions should be followed to avoid the possibility of misapplication or misadjustment.

Official Supplier

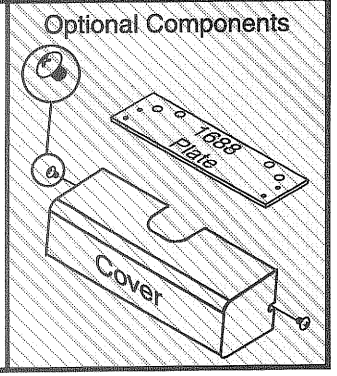
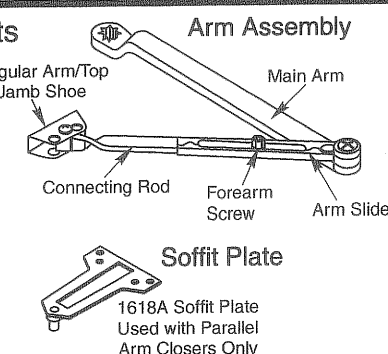
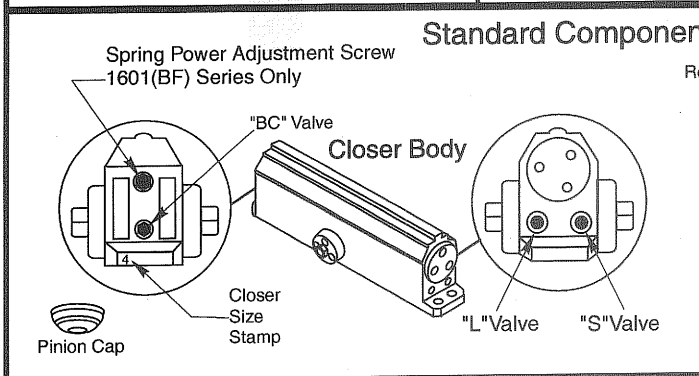
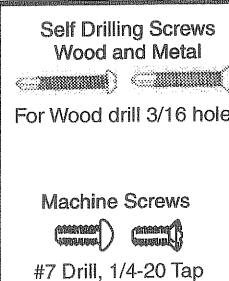
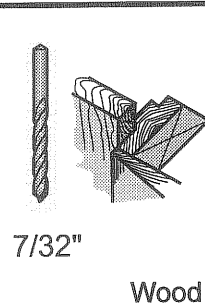
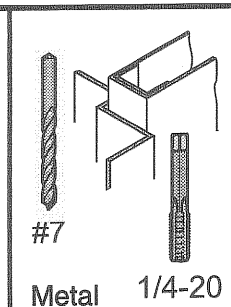
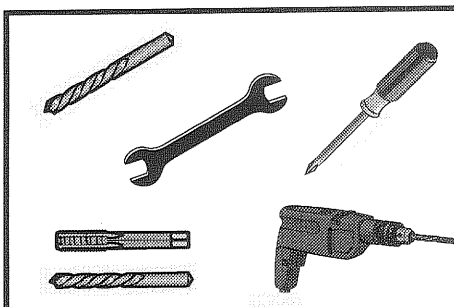
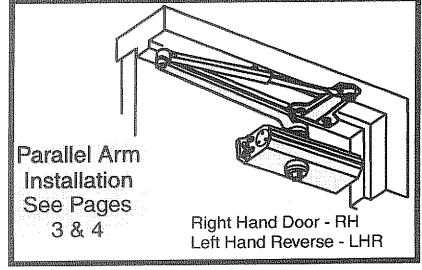
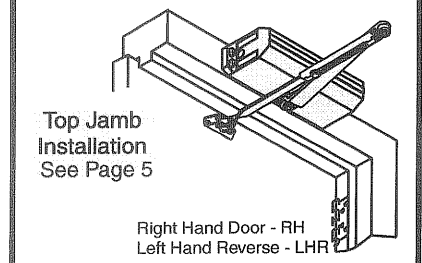
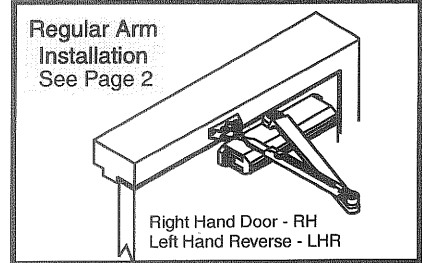
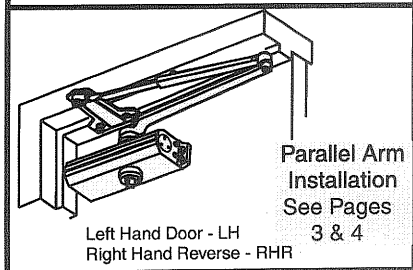
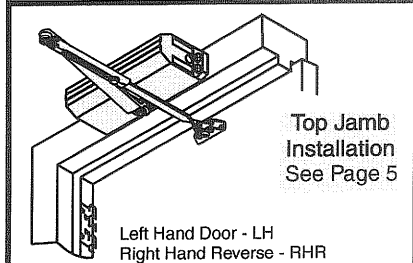
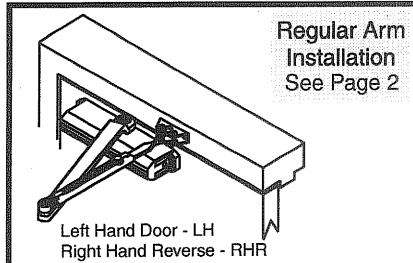


"DA" suffix (Delayed Action) is an optional feature. A separate sheet is supplied showing closer adjustments.

**NOTE:** For special applications a separate door and frame preparation template is packed with these instructions. Use this instruction sheet for installation sequence and closer adjustments only.

- Doors should be hung on ball bearing or anti-friction hinges.
- A separate door stop is recommended.
- Door and frame must be properly reinforced.
- Adjust closing time speed between 3 and 7 seconds from 90° to 0°.

- These door closers should NOT be installed on the exposed side (weather side) of exterior doors.



# 1600 Series

## Non Hold Open Door Closers — Regular Arm

80-9316-2502-020 (12-02)

### 1 Parts

**Optional**

Cover

### 2

Right Hand Shown

Opening	Dimension "A"	Inches (mm)
To 100°	$\frac{7}{8}$ (178)	
101° to 120°	$\frac{6}{8}$ (152)	
* 121° to 180°	$3\frac{1}{2}$ (89)	

\* Door/Wall/Hardware/Jamb conditions permitting

### 3

90°

Stronger +  
Weaker -

1601(BF) Only  
Spring Power Adjust  
(If Necessary)

### 4 Sweep

Slower -  
Faster +

### 5 Latch

Faster +  
Slower -

### 6 Backcheck

Stronger +  
Weaker -

Caution:  
Don't completely close valve

### 7 Pinion Cap or Optional Cover

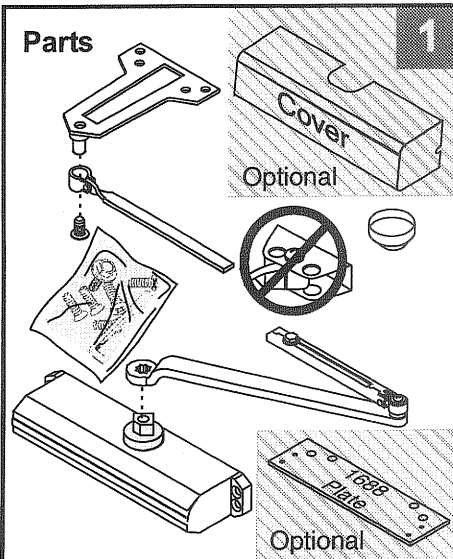
Screw pinion cap onto pinion shaft by hand or with a Phillips screw driver - DO NOT OVER TIGHTEN.



# 1600 Series

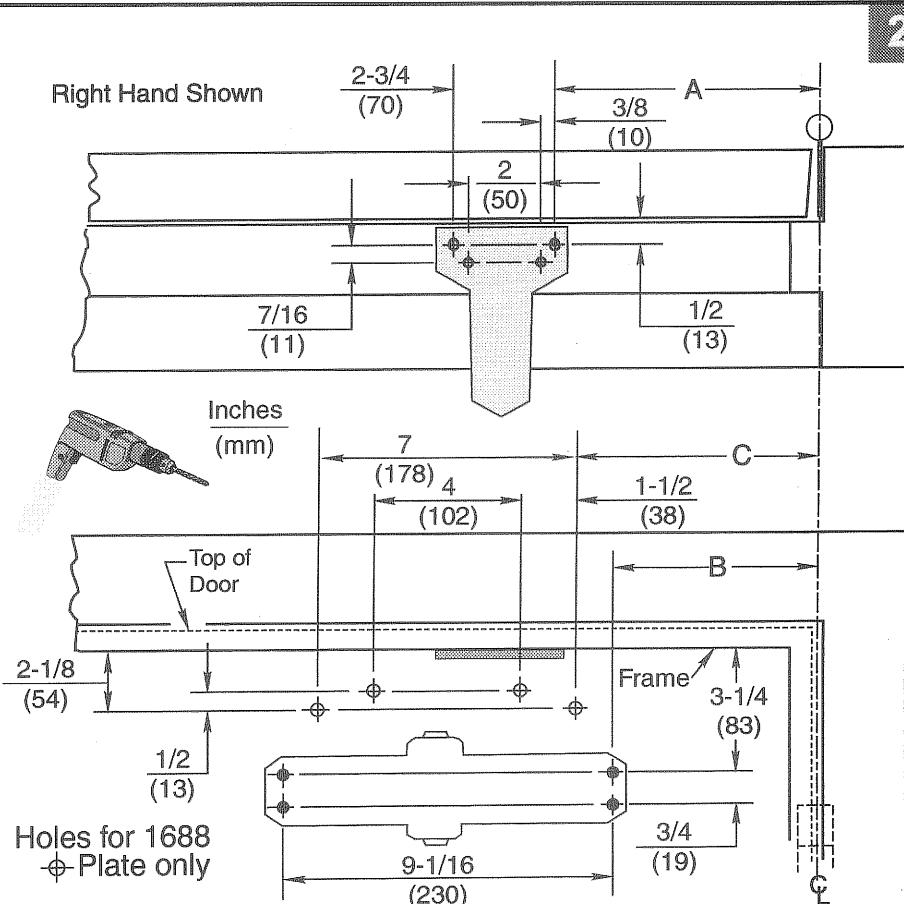
## Non Hold Open Door Closers — Parallel Arm

80-9316-2502-020 (12-02)

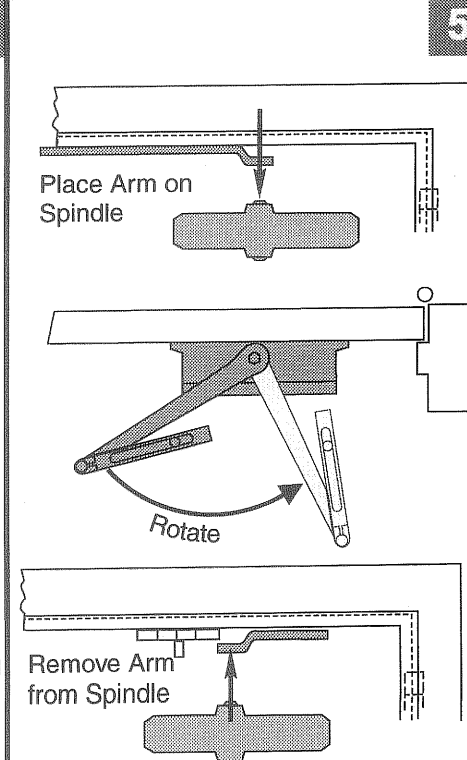
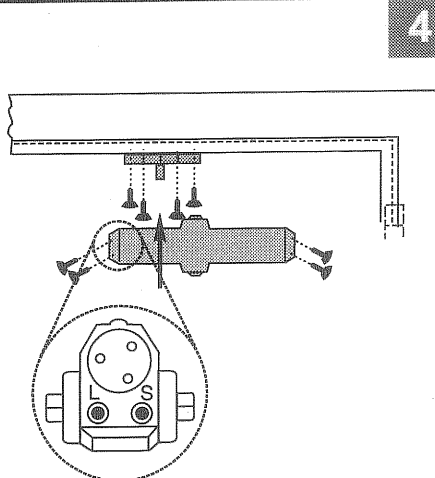
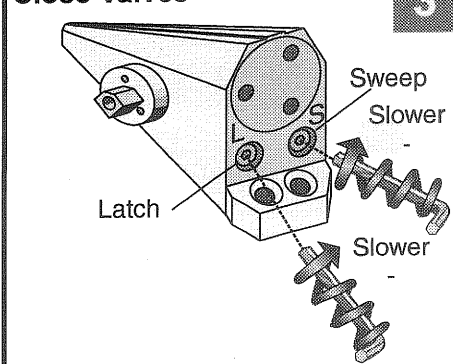


Door Opening	A	B	C
To 100°	9-1/4 (235)	7-5/8 (194)	8-5/8 (219)
101° to 130°	7-3/4 (197)	6-1/8 (156)	7-1/8 (181)
*131° to 180°	5-3/4 (146)	4-1/8 (105)	5-1/8 (130)

\* Door/Wall/Hardware/Jamb conditions permitting



### Close Valves



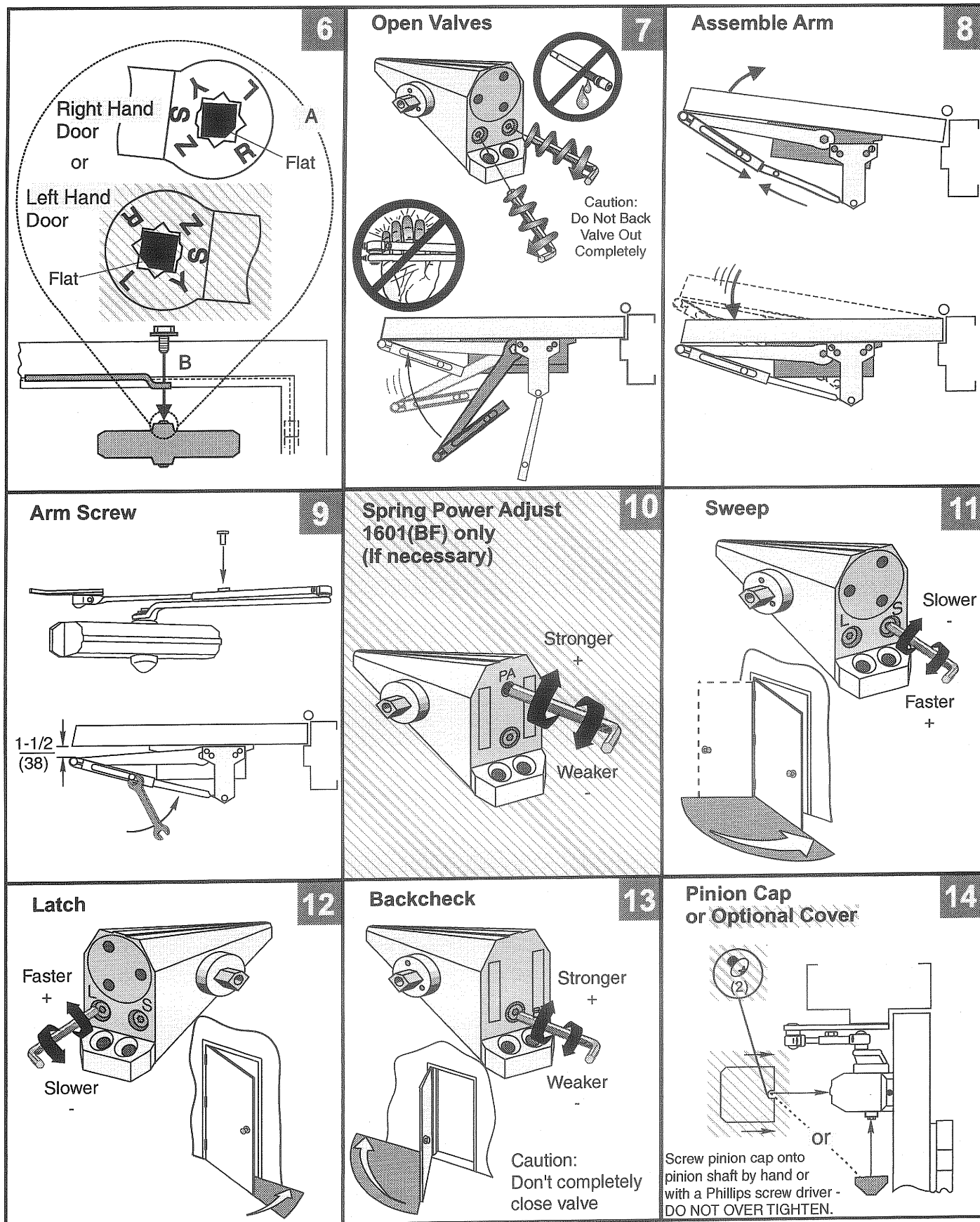
See Step 6 on Page 4



# 1600 Series

## Non Hold Open Door Closers — Parallel Arm

80-9316-2502-020 (12-02)

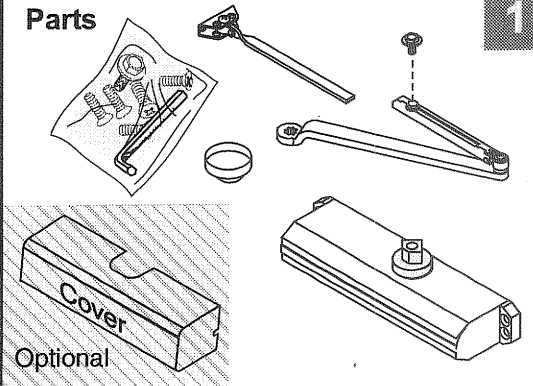


# 1600 Series

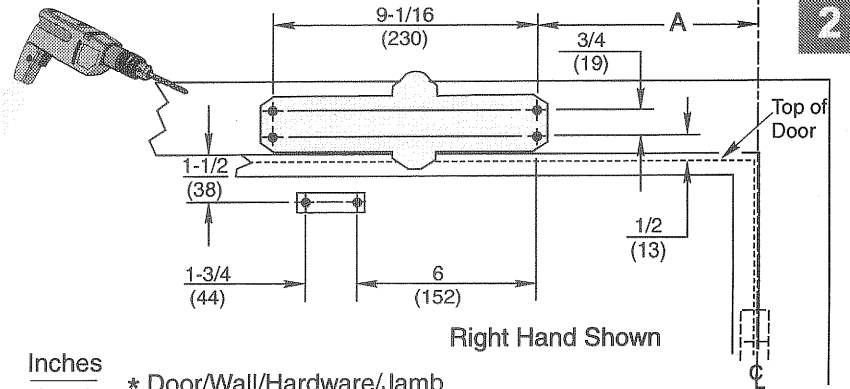
## Non Hold Open Door Closers — Top Jamb Arm

80-9316-2502-020 (12-02)

### Parts



1



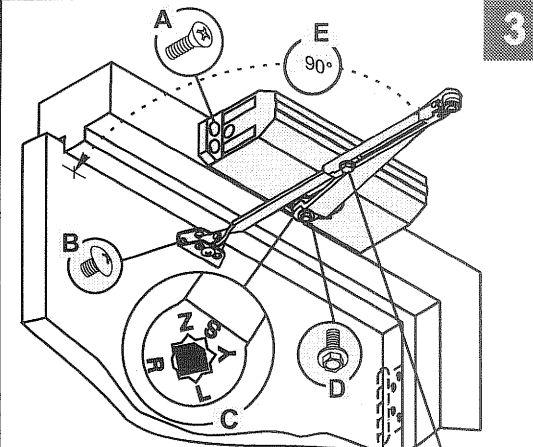
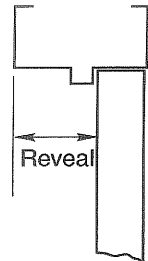
2

Inches  
(mm)

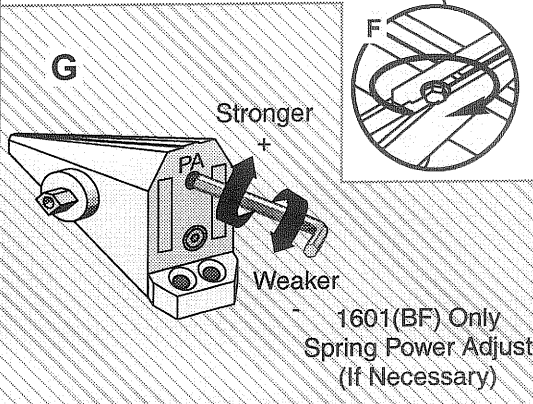
\* Door/Wall/Hardware/Jamb  
conditions permitting

Opening	Dimension "A"
To 100°	7-1/2 (191)
101° to 120°	6 (152)
*121° to 180°	3-1/2 (89)

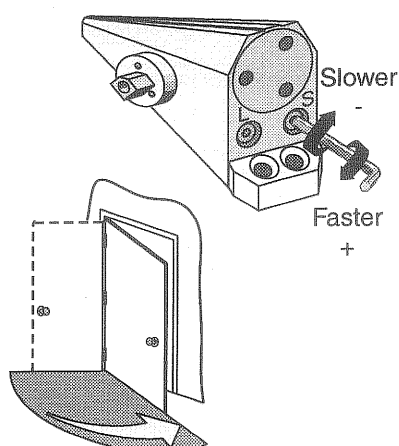
A longer connecting  
rod is required  
for reveals greater  
than 3" (76)



3

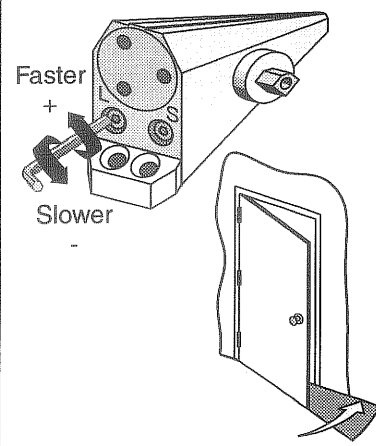


### Sweep



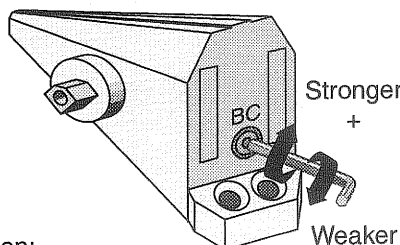
4

### Latch

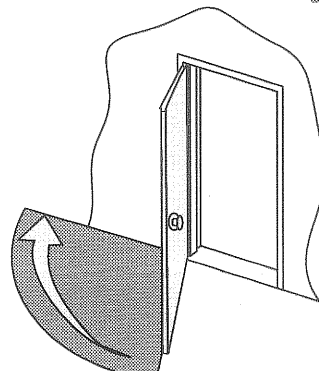


5

### Backcheck

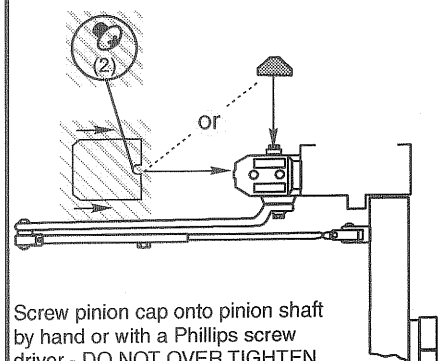


Caution:  
Don't completely  
close valve



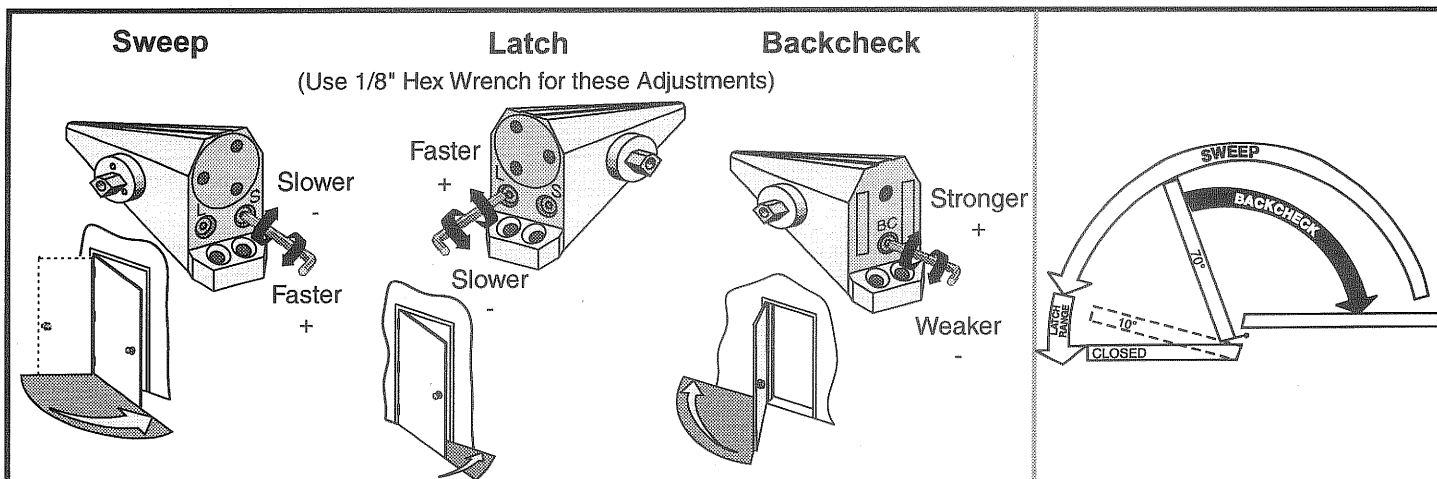
6

### Pinion Cap or Optional Cover



7





## Spring Power Adjust 1601 (BF) only

(Use 1/8" Hex Wrench for this Adjustment)

Adjustment Chart				Number of Turns Required MAXIMUM DOOR SIZE					
	DOOR	TYPE OF INST.	*	34" (0.85M)	36" (0.90M)	40" (1.00M)	44" (1.10M)	48" (1.20M)	
1601BF	INTERIOR	Regular Arm Top Jamb	FULL 360° TURNS OF 1/8" POWER ADJUSTMENT WRENCH	1	1	2	3	3	
		Parallel Arm		2	2	3	4	5	
	EXTERIOR	Regular Arm Top Jamb		5	6	8	NOT RECOMMENDED USE 1601		
		Parallel Arm		8	9	12			
1601	INTERIOR	Regular Arm Top Jamb		FULL 360° TURNS OF 1/8" POWER ADJUSTMENT WRENCH	2	4	6	9	11
		Parallel Arm			3	5	7	10	13
	EXTERIOR	Regular Arm Top Jamb			3	5	7	10	13
		Parallel Arm			5	7	10	14	16

\*18 FULL (360°) TURNS MAXIMUM AVAILABLE

= 8 Turns As Shipped

### To identify your model:

Size Code

2=1602BC

3=1603BC

4=1604BC

5=1605BC

6=1606BC

Date Code

3-6=1601

1-4=1601BF

### Arm Placement in Shoe

7-1/2 % Stronger +

or

7-1/2 % Weaker -